



# NFK GLAZING & INDUSTRIAL SUPPLIES


Professional Products for the Glass & Glazing industry




## NFK 51 SLIM LINE SLIDING SYSTEM FOR GLASS DOORS

NFK Glazing  
& Industrial Supplies


[www.nfk.com.au](http://www.nfk.com.au)

 28 Devlan Street,  
Mansfield, QLD 4122

 07 3343 3377

 [sales@nfk.com.au](mailto:sales@nfk.com.au)

 42 Tacoma Circuit,  
Canning Vale, WA 6155

 08 9455 3866

 [wasales@nfk.com.au](mailto:wasales@nfk.com.au)



# NFK GLAZING & INDUSTRIAL SUPPLIES

## MODERN SLIM LINE SLIDING SYSTEM

- NFK Slim-line Sliding Door System is **aesthetic, sturdy** and **versatile** in both **construction and design**.
- The **sightline is only 51mm** comprising a single piece extruded aluminium track with a clip-on cover and end caps at both ends.
- **2 carriages with three independent rollers provide a smooth rolling motion.**
- Rollers facilitate and prevent the clamp assembly from jumping off the track.
- NFK51 Slim-line Sliding Door System is **efficient and economical**. You don't need to do any glass preparation.
- Suitable for **wall, ceiling mount and for sidelight/highlight panels.**
- Maximum weight of glass panel - **120 kg**
- Suitable for **glass 8/10/12mm thickness**
- **Track length - 3m**

### NFK51 SLIM-LINE SLIDING DOOR SYSTEM KITS CODES

Mounting	Finish	
	brushed nickel	matt black
WALL MOUNT	19-107	19-107.44
CEILING MOUNT with sidelight	19-107FP	19-107FP.44

NFK Glazing & Industrial  
Supplies

[www.nfk.com.au](http://www.nfk.com.au)

 28 Devlan Street,  
Mansfield, QLD 4122  
 07 3343 3377  
 [sales@nfk.com.au](mailto:sales@nfk.com.au)

 42 Tacoma Circuit,  
Canning Vale, WA 6155  
 08 9455 3866  
 [wasales@nfk.com.au](mailto:wasales@nfk.com.au)



# NFK GLAZING & INDUSTRIAL SUPPLIES

## COMPONENTS OF THE SLIM LINE SLIDING SYSTEM

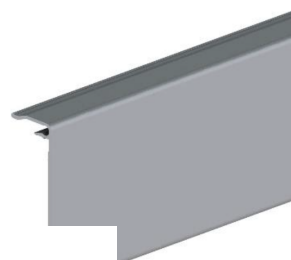
1

ALUMINIUM TOP TRACK



3

ALUMINIUM CLIP-ON COVER



2

THREE WHEEL CARRIAGE



4

END STOPPER WITH CATCH DEVICE



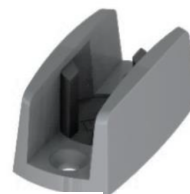
5

END CAP



6

SINGLE-U STAINLESS STEEL FLOOR GUIDE



7

DOVETAILED U-CHANNEL



8

BOTTOM U-CHANNEL



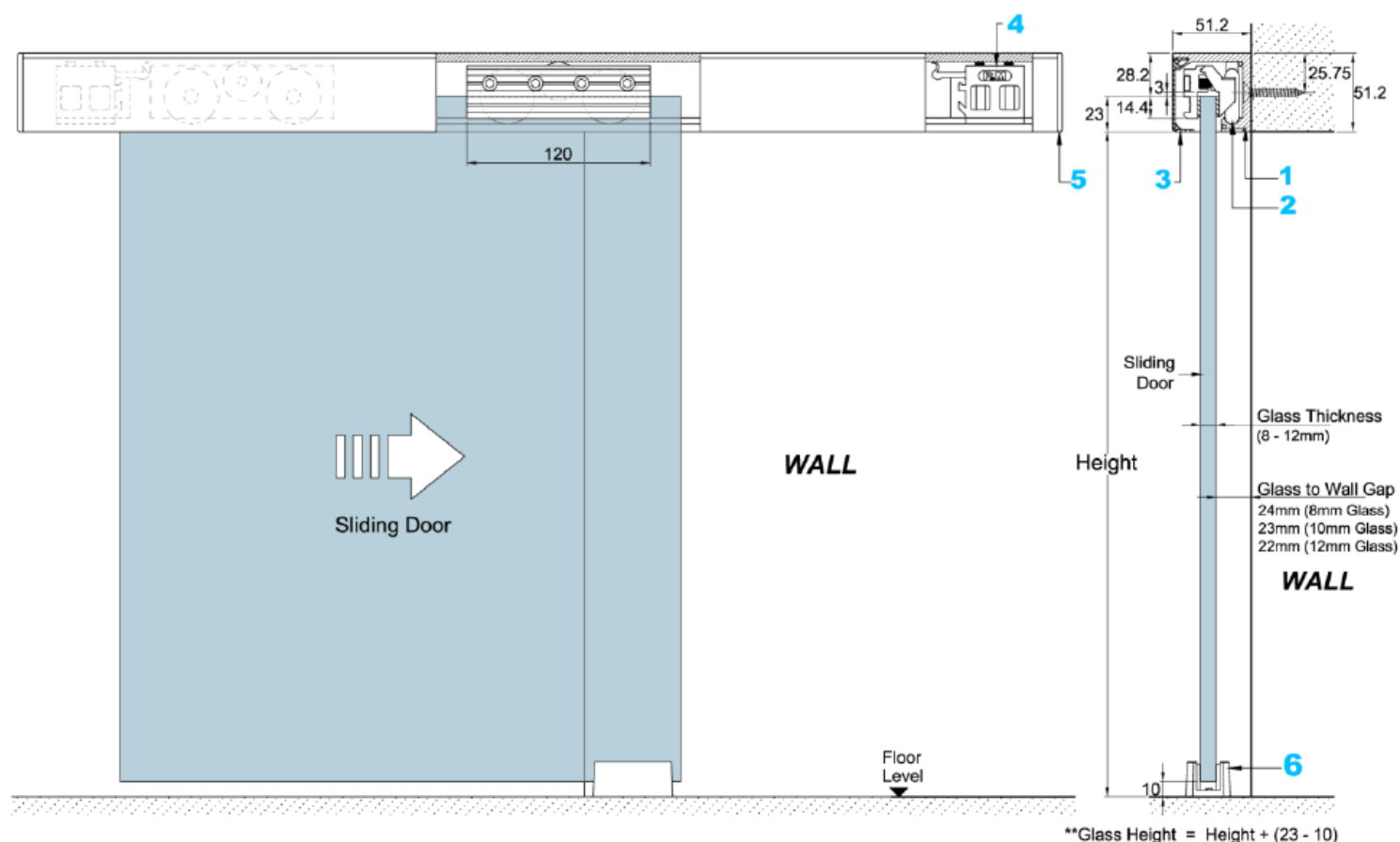


# NFK GLAZING & INDUSTRIAL SUPPLIES

## WALL MOUNTED KIT

### # WALL MOUNTING SLIDING DOOR SYSTEM KIT COMPONENTS: QTY

1	Aluminium top track	1
2	Three wheel carriage	2
3	Clip-on aluminium cover	2
4	End stopper with catch device	2
5	End cap	2
6	Single-U stainless steel floor guide	1





# NFK GLAZING & INDUSTRIAL SUPPLIES

## CEILING MOUNT WITH SIDELIGHT BELOW THE TRACK



### # CEILING MOUNT WITH SIDELIGHT KIT COMPONENTS: QTY

1	Aluminium top track	1
2	Three wheel carriage	2
3	Clip-on aluminium cover	2
4	End stopper with catch device	2
5	End cap	2
6	Single-U stainless steel floor guide	1
7	Dovetailed U-channel	1
8	Bottom U-channel	1

